

C-MESH-224



The Flooring Solutions

*your color story*

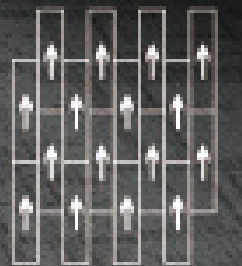
## PATTERNS

25cm x 100cm, 50cm x 50cm, 60cm x 60cm

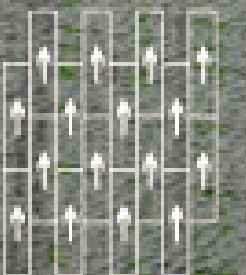
### INDEX

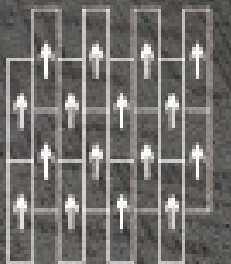
### PAGE

C-Mesh 224003-Ashlar	2
C-Mesh 224012-Ashlar	3
C-Mesh 224001-02-04-Ashlar	4
C-Mesh 224001-02-Ashlar	5
C-Mesh 224022-Herringbone	6
C-Mesh 224001-02-03-04-Herringbone	7
Specification	9

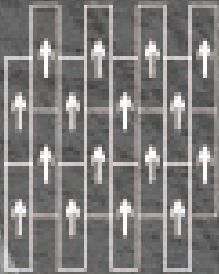


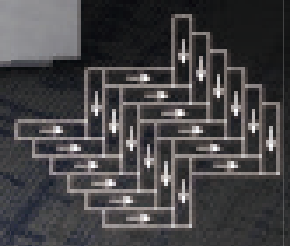
C-MESH 224003-Ashlar



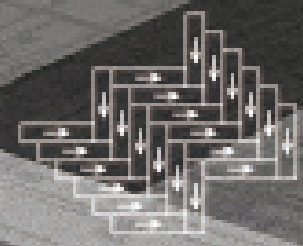


C-MESH 224001-02-04-Ashlar

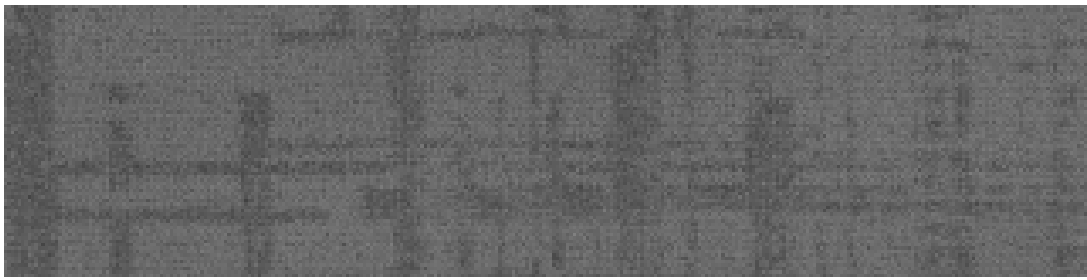




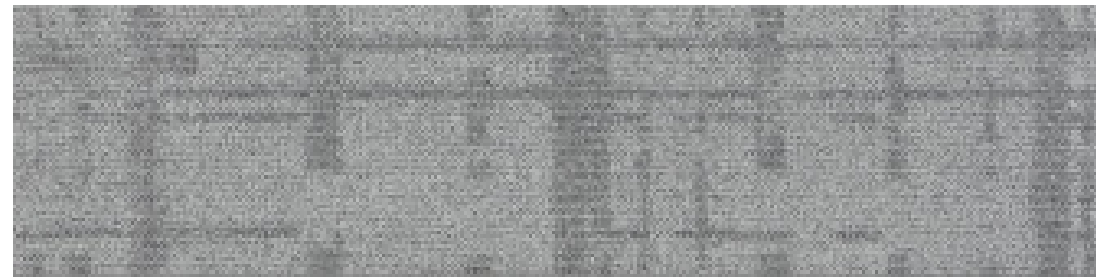
C-MESH 224022-Herringbone



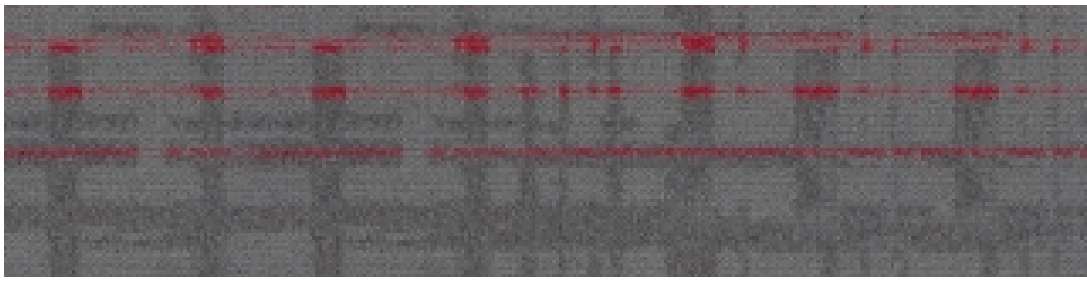
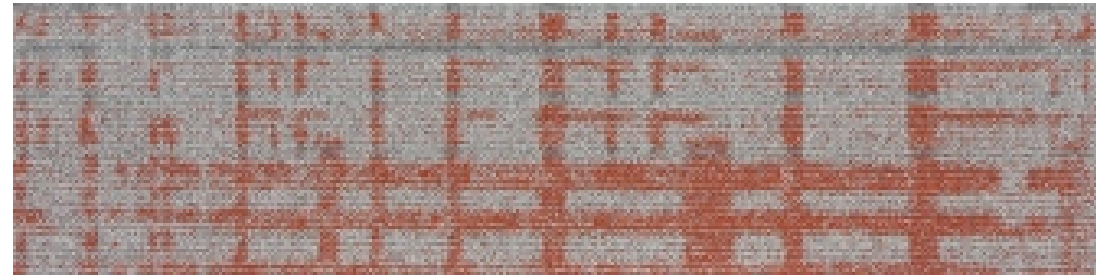
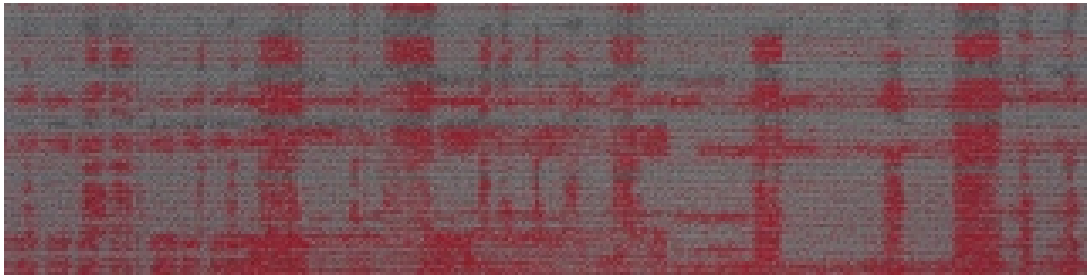
C-MESH 224001-02-03-04-Herringbone  
2:5:1.5:1.5



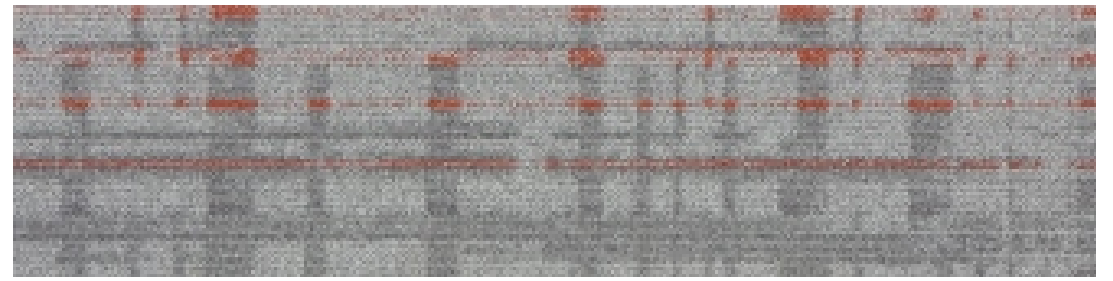
C-MESH 224001



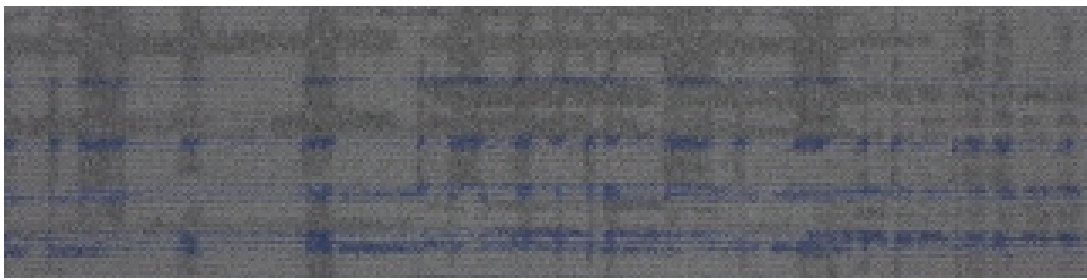
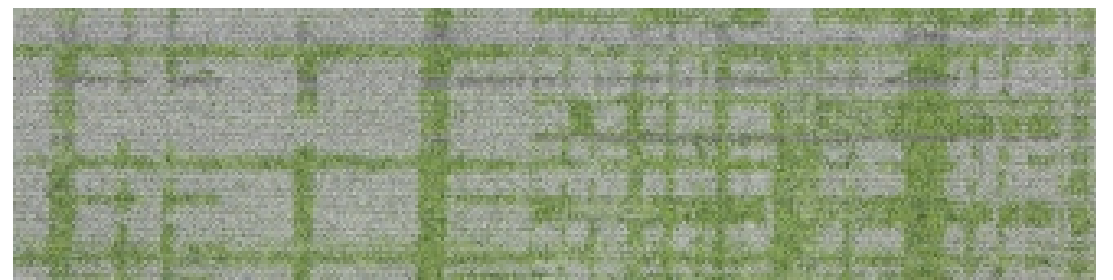
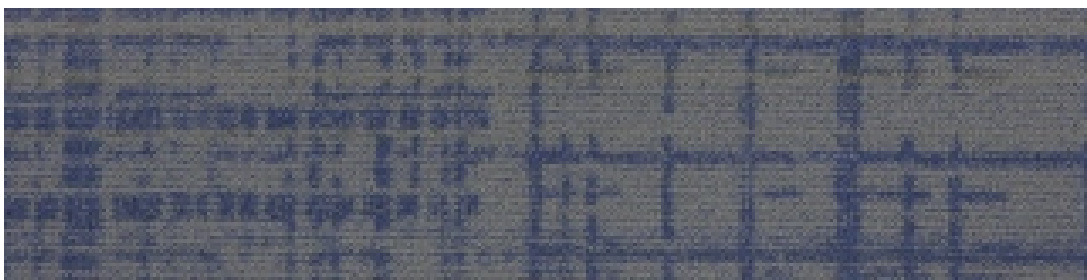
C-MESH 224001



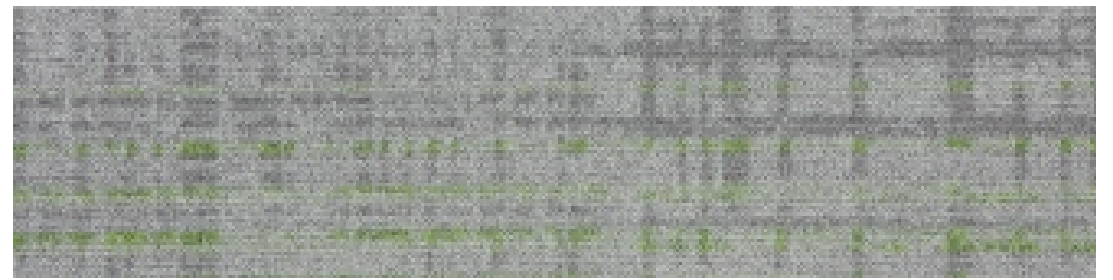
C-MESH 224021



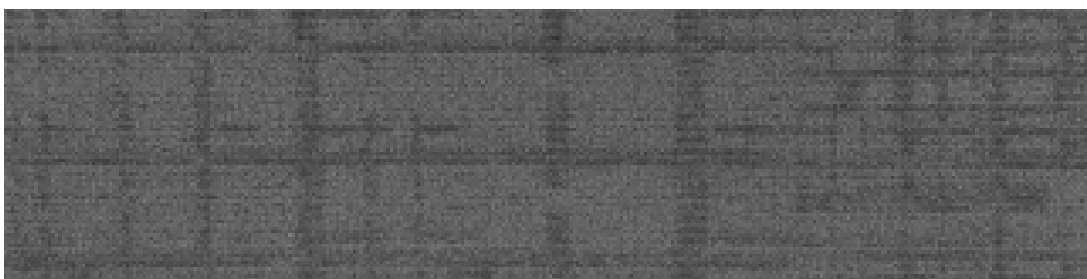
C-MESH 224011



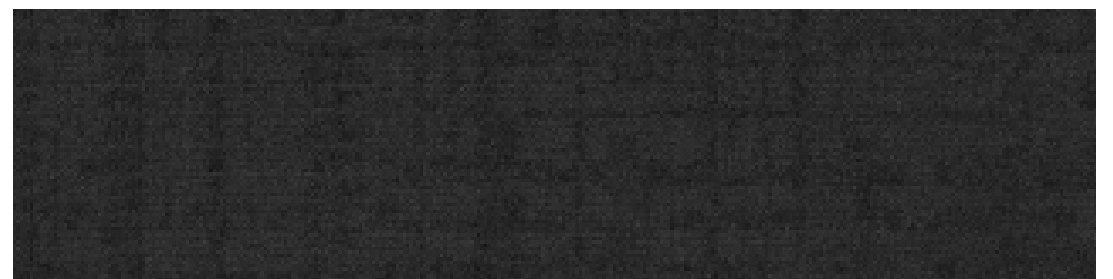
C-MESH 224022



C-MESH 224012



C-MESH 224003



C-MESH 224004



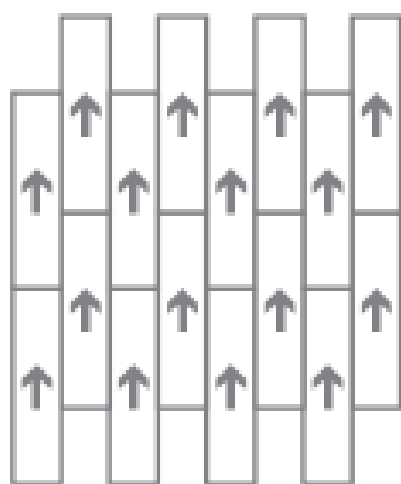
C-MESH 224005



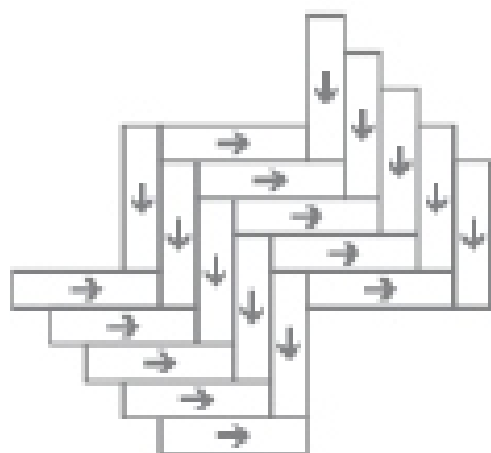
Specification

Product Name	C-MESH 224
Product Code	C-MESH 224
Tufted construction	Multi-Level loop
Fiber	100% Nylon 100%
Dye method	Solution Dyed
Gauge	1/10
Tufted weight(g/m <sup>2</sup> )	550 ± 5%
Tile size(mm)	250x1000, 500x500, 600x600
Pile height(mm)	4.0 ± 0.5
Total thickness(mm)	6.5 ± 0.5
Standard Backing	Glass fiber reinforced PVC

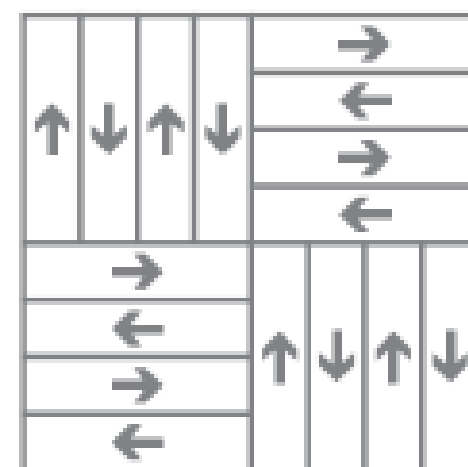
Recommended installation methods



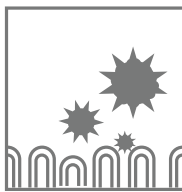
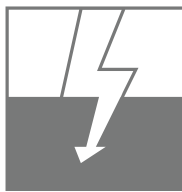

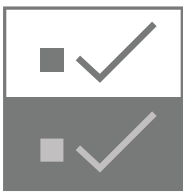
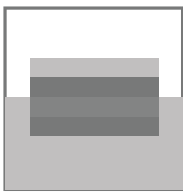
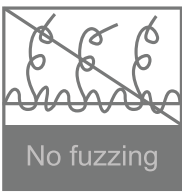


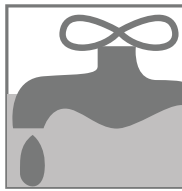
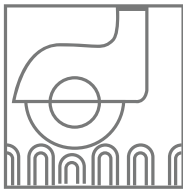
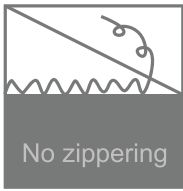



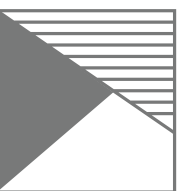

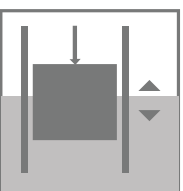

Ashlar



Herringbone



Basketweave

 Anti-fouling	 Anti-static	 Environmental	 Passed various tests	 Fashion colors	 100%B,C,F Yarn
 Reduced Flammability	 Isolation acoustic	 Colorfast	 Chair roulettes	 No edge ravel	 Wear resistance
 Soil Resistance	 Wear Warranties	 Dimensional Stability	 Long life-span	 Easy to transport	 Non-moid